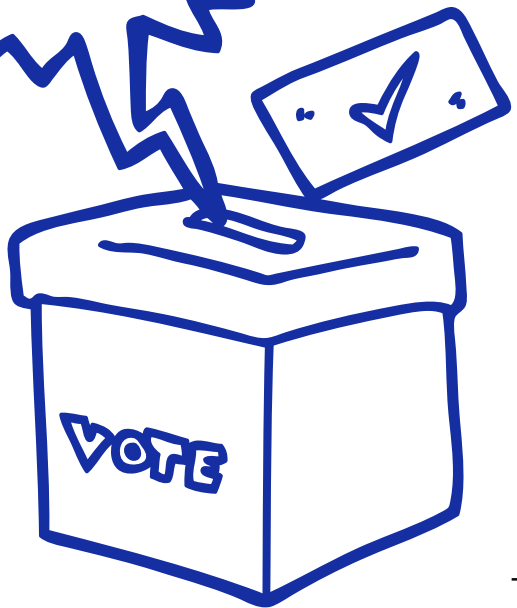


THE VOTE THE TRUTH & THE AI:

HOW TO SPOT AI ELECTION THREATS

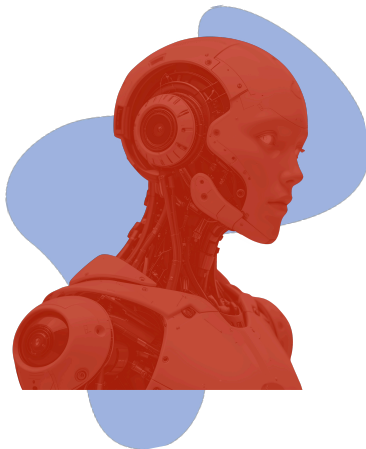
**A COMMUNITY GUIDE
TO AI & ELECTION
PROTECTIONS**



WHAT IS ARTIFICIAL INTELLIGENCE ?

Artificial Intelligence (AI) can create images, voices, or texts that look and sound real — but aren't.

It can also find patterns in data, and make it possible to target specific communities or people. Misuse of AI is considered voter suppression (intimidating or misleading voters, spreading false information).



HOW IS AI DISRUPTING ELECTIONS?

- Creating fake social media accounts
- Generating realistic but false videos (“deepfakes”)
 - Analyzing voter data to target misleading messages
- Imitating news outlets or campaign materials

WHO IS A TARGET?

Groups that are being targeted by voter suppression efforts are also likely targets of AI misuse, including:

- Formerly incarcerated individuals
 - Racial and Ethnic minorities
 - Low-income families
 - Senior citizens

DEEPPFAKES:

an AI-made image or recording that has been manipulated to misrepresent someone as doing or saying something that they did not do



Common examples:

- Fake candidate speeches
- Doctored interviews
- Edited crowd scenes

How to spot them:

- Watch for unnatural blinking
- Listen for odd tone shifts
- Mismatched lip-syncing

Example of AI Image:



If something feels off — pause, verify, don't share

DISINFORMATION CAMPAIGNS

a coordinated effort to spread intentionally false or misleading information, often through generated content or deepfakes

What it looks like:

- Identical posts or comments
- Fake local “news” pages
- Extreme news headlines
- Fake accounts messaging voters
- Hyper-personalized messaging
- Confirms your own bias

How to spot them:

- Unfamiliar news sources
- No date or outdated
- Rage bait headlines or content

Purpose:

To make people distrust news, candidates, or the voting process

Clickbait & Fake News



Kim Kardashian slammed by fans for 'narcissistic' National Daughters Day post

KIM KARDASHIAN

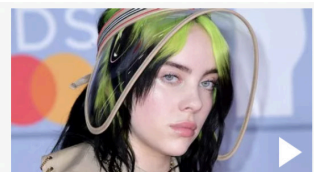
3



Real James Bond would have to be better with his brains than fists, expert says

WORLD WAR 2

1



Billie Eilish awkwardly ignores fan who says she idolises her during Q&A session

BILLIE EILISH

1

Talk before you share — a quick fact-check can put an end to disinformation

RED FLAGS

Suspect texts, emails, phone calls, or social media posts with

- Claims that voting rules suddenly changed (for example, the polling location/ hours changed)
- Requests for personal information
- Caller says they are law enforcement or election officials
- A link that takes you to a website which requests personal information (for example, a website that claims to help you register to vote or verify your eligibility)

Real election officials will never threaten you.

When in doubt, check trusted sources before sharing information.

- ✔ Only use official state or local election sites.
- ✔ Report suspicious phone calls, emails, texts and social media posts to 866-OUR-VOTE.

THE TRUTH IS OUT THERE! WHERE TO LOOK...

When in doubt, use trusted sources to fact check.



<https://www.michigan.gov/sos>



<https://www.promotethevotemi.com/>



<https://myballotmypower.org/>



<https://866ourvote.org/>
866-OUR-VOTE

Remember to do your research to protect your right to vote this upcoming election season.

NOT SURE IF YOU'RE REGISTERED TO VOTE IN MI?

1. Go to the Michigan Voter Information Center:
<https://mVIC.sos.state.mi.us/>
2. Search for "Your Voter Information"
3. Click "Am I registered?"
4. Fill out your voter information
5. While there, you can confirm your polling place, request an absentee ballot, or register to vote

The screenshot shows the Michigan Voter Information Center website. The header includes the Michigan state logo and the text "Michigan Voter Information Center". Navigation links for "Home", "Your voter information", and "Vote a home" are visible. A large black octagon with a white exclamation mark is present. Below it, a teal square icon with a white person silhouette is shown. A list of links is displayed, with "Am I registered?" circled in red. A warning message at the top right states: "Because the next election is within th in the upcoming election but you will".

Michigan Voter Information Center

Home Your voter information Vote a home

Preregister or register to vote online
Apply for an absentee ballot online
Voter forms and publications
Your clerk
Notice of cancellation
Subscribe to ballot notifications
Unsubscribe from ballot notification list

Voter information
Early voting
Military and overseas voters
Students
Voter cancellation procedures
Voters with disabilities

About elections
Election results and data
Election security
How to vote in Michigan

! Because the next election is within th in the upcoming election but you will

Your voter information
Where are my clerk's offices?
Where are my ballot drop boxes?
Where is my polling place?
Am I registered?
What's on the ballot?